



STALLION

ESTABLISHED 1984

SAVES TIME SAVES MONEY



**NEW
ELECTRIC
START**
*OPTIONAL EXTRA

IF IT'S NOT A STALLION...IT'S NOT THE BEST FEEDER

MTF SERIES



link to video

KEY MTF FEATURES INCLUDE

- Mix and feed out colostrum or milk to calves.
- Carry up to 1000 litres for feeding at the pen or paddock.
- Available in 50, 60, 70 or 80 teat units.
- Self cleaning, simply quarter fill the tank with clean water and start the pump. Feeder will self wash, within 3 minutes.
- Made by New Zealand's leading calf feeding company and comes with a 2 year warranty.
- Guaranteed to save you time.

It mixes milk powder or any other milk replacer with ease



Models

MTF 50 / 50 teat / 1000L tank (tandem axle)
1450H x 1520W x 3520L

MTF 60 / 60 teat / 1000L tank (tandem axle)
1450H x 1520W x 3520L

MTF 70 / 70 teat / 1000L tank (tandem axle)
1450H x 1520W x 4200L

MTF 80 / 80 teat / 1000L tank (tandem axle)
1450H x 1520W x 4800L



Click and Clean



Nozzle and Hose



Easy Clean
Manifold Design



Electric Start
***OPTIONAL EXTRA**



Honda 4 Stroke Pump



Camlock Fast Fill

MTF 60



MT SERIES



link to video

MIXER TANKERS

Developed to save time and be easy to use, the MT Range of mobile tanker/mixer is available in both 500 litre (single axle) and 1000 litre (tandem axle) models.

Built on a strong galvanized steel frame the tanker can carry and mix colostrum, milk powder or any other calf supplements that you want to feed out. Now with new fast fill system and transport arms to carry small feeders.

Calibrated Floating Level Indicator



Models

MT 500 / 500L tank (single axle)
1240H x 1450W x 3000L

MT 1000 / 1000L tank (tandem axle)
1450H x 1450W x 3000L

Click and Clean



Dispensing Gun



MT 1000



Honda 4 Stroke Pump
***ELECTRIC START
OPTIONAL**



Camlock Fast Fill



25mm Drain Valve



New Transport Arms for
Feeders



MG SERIES

MOBILE GRAVITY FEEDERS

- Manifold made for easy cleaning and milk flow.
- Choice of larger tanks at 500L or 1000L.
- Larger tank lids with three way locking system, built to withstand high wind.
- Enclosed manifold means no contamination of the milk.
- Enhanced stability with lower point of gravity.
- Easy to level on uneven surface.
- Stronger frame with heavier gauge galvanised steel.



Models

MG26 / 26 teat / 250L tank (single axle)
1200H x 1200W x 1250L

MG40S / 40 teat / 500L tank (single axle)
1180H x 1400W x 1900L

MG50S / 50 teat / 500L tank (single axle)
1180H x 1400W x 2500L

MG50LT / 50 teat / 1000L tank (tandem axle)
1390H x 1400W x 2500L

MG60S / 60 teat / 500L tank (single axle)
1180H x 1400W x 3100L

MG60LT / 60 teat / 1000L tank (tandem axle)
1390H x 1400W x 3100L

MG80LT / 80 teat / 1000L tank (tandem axle)
1390H x 1400W x 4800L



Easy Clean Manifold

MG50S



Retractable Drawbar

ORDER NOW ON | 0508 688 688



MF SERIES

MODULAR FEEDERS

- 50-70 teat models.
- 500 or 1000 Litre tank.
- Dual axle or single axle.
- Slip on, slip off troughs for in shed feeding.
- Designed to feed 12 – 70 calves depending on demand.
- 2 Year warranty.

MF50LT

Models

MF50S / 50 Teat / 500L Tank (single axle)
1380H x 1550W x 2850L

MF50LT / 50 Teat / 1000L Tank (tandem axle)
1730H x 1550W x 2850L

MF60LT / 60 Teat / 1000L Tank (tandem axle)
1730H x 1550W x 3400L

MF70LT / 70 Teat / 1000L Tank (tandem axle)
1730H x 1550W x 3950L



If you're looking for a multi-use feeder our MF feeder is the one to look at. Designed to be able to remove the individual feeders for in shed use, ideal for the smaller farmer or life style farmer. The mobile can be used for smaller numbers of calves and then expanded as numbers increase.

OT SERIES

KEY OT FEATURES INCLUDE

- Choice of larger tanks at 500L or 1000L.
- Larger tank lids with three way locking system, built to withstand high wind.
- Lower inspection point with repositioned side access.
- Stronger frame with heavier gauge galvanised steel.
- Enhanced stability with lower point of gravity.
- Easy click-and-clean system.
- Easy turn Hansen milk taps.

Models

OT50S / 50 teat / 500L tank (single axle)
1280H x 1850W x 2800L

OT50LT / 50 teat / 1000L tank (tandem axle)
1440H x 1850W x 2800L

OT60LT / 60 teat / 1000L tank (tandem axle)
1440H x 2320W x 3020L



Easy to use Handles

OT 50S

Retractable Step on OT60

WWW.STALLION.CO.NZ |



MILK MAID SERIES



Stallion Plastics complete range of MM and FC feeders, have been thoroughly tested and proven to effectively feed calves from first day through to weaning. A must for every calf rearer. Stallion has the largest range of feeders in New Zealand.



MM3 260H x 280W x 430L / 16 litre / 3 teat



MM1 280H x 170W x 240L / 4 litre / 1 teat



MM5 260H x 250W x 700L / 25 litre / 5 teat

MM6 260H x 260W x 850L / 30 litre / 6 teat

MM8 275H x 245W x 1460L / 40 litre / 8 teat



MM10 350H x 500W x 1200L / 66 litre / 10 teat

MM12 350H x 530W x 1230L / 70 litre / 12 teat



MM15 280H x 245W x 2720L / 90 litre / 15 teat



MM13 320H x 280W x 1810L / 40 litre / 13 teat



CAP22

Use with all pull through Teats



LTD

Lamb bottle cap



BLANK CAP

Blanks off Teats



LTCAP

Cap for lamb Teat on feeders



PCAP

To fit threaded PeachTeat



SCAP

Suits Stallion Teats



CAPS TO FIT STALLION FEEDERS

ORDER NOW ON | 0508 688 688



CALFATERIA SERIES



BKT 280H x 240W x 320L / 10 litre / 3 teat



FC5 255H x 250W x 700L / 30 litre / 5 teat



SCB Calf Bottle
2.5 litre / 1 teat



SD Calf Drencher
2.5 litre



FC20 940H x 1120 diameter
160 litre / 20 teat



FC15 275H x 245W x 2700L
110 litre / 15 teat



FC12 300H x 520W x 1130L / 80 litre 12 teat
Also available in **FC10**



FC13 320H x 285W x 1800L / 80 litre 13 teat



RFC5 275H x 295W x 805L

WATER/MEAL EQUIPMENT



HAY Hay & Meal Feeder
700H x 500W x 620L



HAYJ Hay & Meal Feeder
700H x 500W x 1210L



HAYPEN
630H x 350W x 650L / 60 litre



PD 8 litre water trough
200H x 350W x 300L



SMF Meal Feeder
585H x 360W x 920L / 30kg



SC1
300H x 230W x 310L / 6 litre

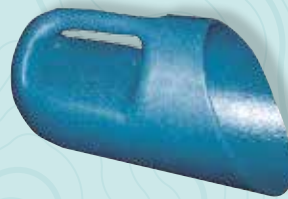
LAMB FEEDERS



LT Stallion Lamb Teats for bottles or any MM or FC feeder.



BTL 1 litre / Single teat



SC Poly Scoop with a capacity of 2kg
160H x 160W x 300L



BKTL 10 litre / 7 teat / bracket suitable for wood or wire fences
280H x 240W x 320L

MEAL FEEDERS



SALT BLOCK SAVER 555W x 555L x 140H



PMF 510H x 400W x 500L / Capacity 12kg



CMF 580H x 670W x 1060L / Capacity 40kg

PC Capacity 55kg
1260H x 740 diametre

PCBS Capacity 55kg
Bird Skirts
1260H x 740 diametre

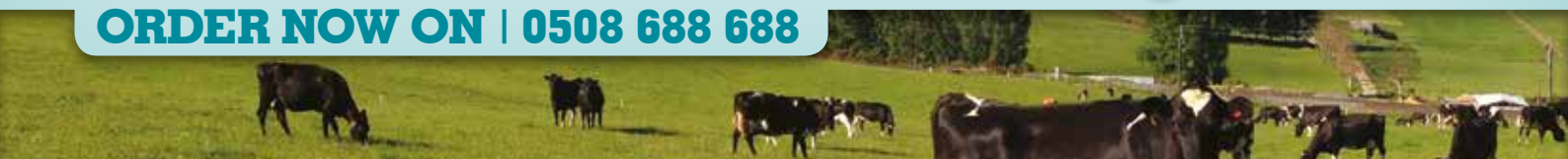


LPMF Meal Feeder 250H x 425W x 1050L / Capacity 25kg



JPC Capacity 85kg
1450H x 890 diametre

ORDER NOW ON | 0508 688 688



MEAL/WATER TROUGHS

Hook on



PF10 230H x 335W x 410L / 10 litre



PT10 310H x 340W x 400L / 10 litre
PT30 300H x 410W x 880L / 30 litre



PF30 230H x 410W x 880L / 30 litre

MEAL TROUGHS

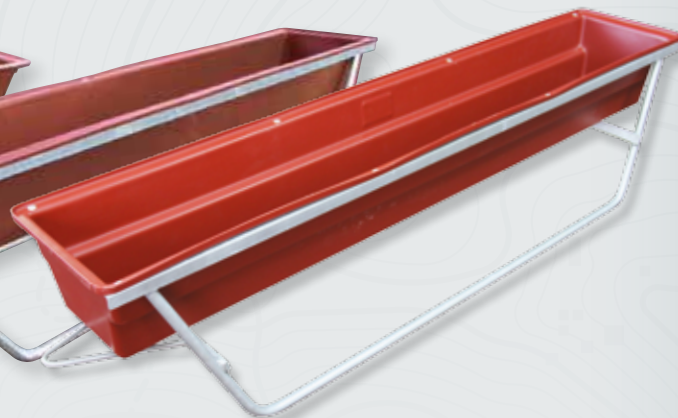
with Legs and Sled Frame



AFT4 WITH LEGS
400H x 395W x 2440L



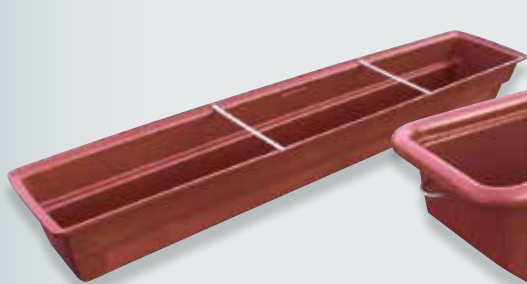
AFT4 SLED
440H x 390W x 2440L, 110L



AFT3 SLED
420H x 345W x 1815L, 70L

MEAL TROUGHS

Free Standing



AFT3 BARE
Free Standing
220H x 340W x 1800L



AFT6
Free Standing
300H x 410W x 2020L



AFT2
Free Standing
300H x 410W x 1420L



AFT1
Free Standing
205H x 345W x 900L



GOAT SERIES



Designed to work specifically with goats, these feeders have been field tested with great results. Light and easy to carry, they come with plated brackets and teats. Hay feeders are designed to allow kids to pull the ideal amount of hay out of the feeder.



TIP

Put a tyre around the base of the feeder. It creates a sturdier base as well as making a step for smaller kids.

GTC15 900H x 600 diameter / 90 litre

- Suction-fed 15 teat milk feeder
- Teats are connected to a straw with a one-way valve at the bottom
- Holds up to 90L
- Sturdy lid attached by bungy-cord
- Galvanised steel base that can be pegged to the ground



GTHAY 600H x 350W x 650L / 60 litre

- Two plated brackets
- 12 small holes designed to allow kids to pull an ideal amount of hay out of the feeder



TIP

Place the feeder higher on the fence. By making the kid step up to the meal, you make it that much harder to spoil.

GTM15 460H x 200W x 390L / Capacity 15kg

- Two plated brackets with adjusting heights
- Holds up to 15kg of meal
- Three feed holes making it difficult for goats to stand in



GTM30 460H x 220W x 770L / Capacity 30kg

- Two plated brackets with adjustable heights
- Holds up to 30kg of meal
- Six feed holes making it difficult for goats to stand in



GT8 250H x 240W x 700L / 25 litre / 8 teat

- Gravity-fed 8 teat goat/kid feeder
- Two plated brackets with adjusting heights
- Eight tough goat teats
- Light and easy to carry



GT15 275H x 245W x 1780L / 70 litre / 15 teat

- Gravity-fed 15 teat goat/kid feeder
- Three plated brackets with adjusting heights
- 15 tough goat teats
- Two built-in handles

ORDER NOW ON | 0508 688 688



WATER TROUGHS



TROUGH WT80 350H x 500W x 850L / 80 litre

- Handy 80 litre trough.
- Great for break feeding or in smaller paddocks.
- Quality ballcock with removable cover.
- Also available in: **ECO80** bare black trough.



TROUGH WT120 320H x 630W x 970L / 120 litre

- Lightweight but strong, this 120 litre trough is ideal for the small paddock.
- Complete with valve.
- Also available in: **ECO120** bare black trough.



TROUGH WT180 320H x 830W x 1100L / 180 litre

- Suitable for placement in the fenceline to service two paddocks.
- Centre-mounted fully protected Hansen valve.
- Strong and durable.



TROUGH WT360 420H x 820W x 1580L / 360 litre

- Big 360 litre trough for cattle, deer or sheep.
- Designed to service one or two adjacent paddocks.
- Extra strong to withstand the rigours of larger animals in a permanent position.
- Light, tough and easy to position in those areas where concrete installation is impractical.
- Centre-mounted fully protected Hansen valve.

WATER TROUGHS

Permanent water supply

Model	WT95	WT150	ECO150	WT260	ECO260	WT600	WT600 Bare	WT1000	WT1000 Bare
Shape	round	round	round	round	round	round	round	round	round
Diam. (mm)	670	900	900	1000	1000	1500	1500	1650	1650
Height (mm)	420	380	380	480	480	495	495	620	620
Valve	no	yes	no	yes	no	yes	no	yes	no
Cover	no	yes	no	yes	no	yes	no	yes	no
Colour	green	green	black	green	black	green	green	green	green



WT95



WT150/ECO150



WT260/ECO260



WT600



WT1000

ORDER NOW ON | 0508 688 688



MULTI PURPOSE LONG TROUGHS

These long troughs are suitable for both permanent and portable situations

- Through the fence permanent water supply.
- Sheep yards or other confined spaces.
- Easily transportable on farm bikes over rough terrain.
- Strong and robust to cope with wear and tear.
- Long for maximum animal access.



WT130

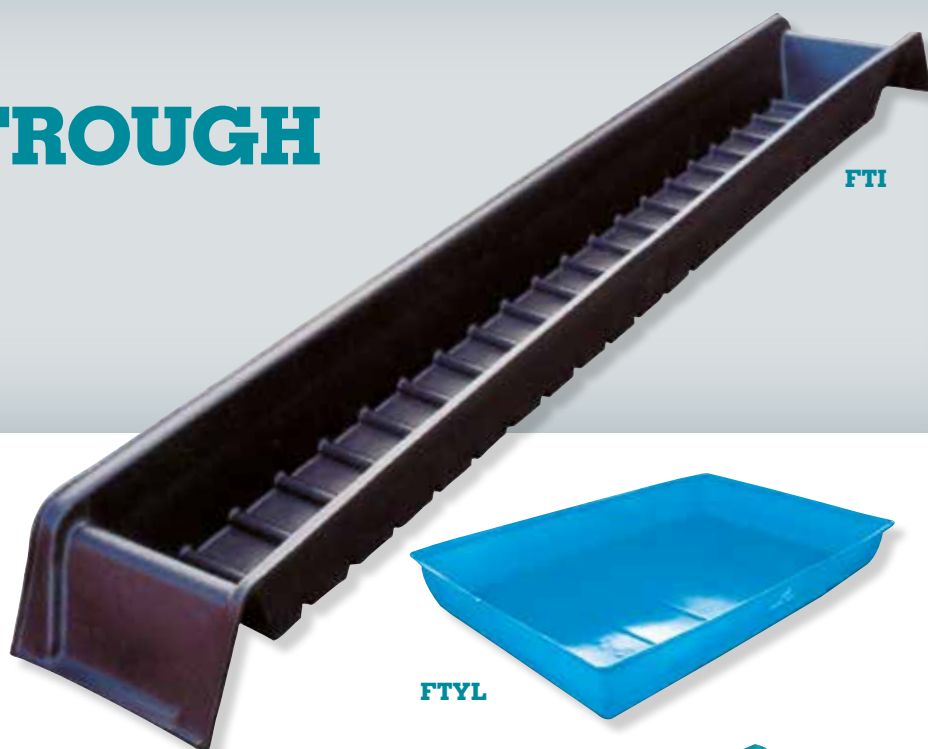


WT90

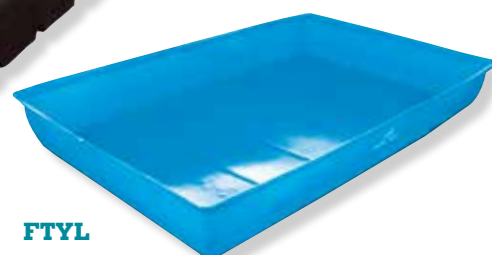
Model	WT90	WT130
Volume (litres)	90	130
Length (mm)	1400	2000
Width (mm)	410	410
Height (mm)	295	295

FOOTROT TROUGH

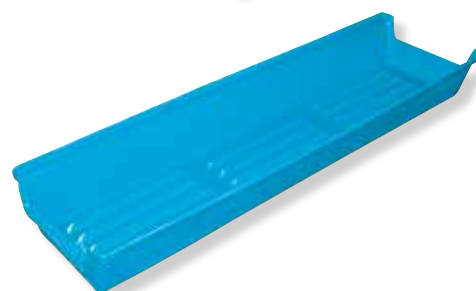
- Designed for sheep and goats.
- Fits in a race.
- Sloping ends to prevent leg damage.
- Well ribbed base.



FTI



FTYL



FB

Model	FTI
Volume (litres)	70
Length (mm)	2400
Width (mm)	340
Height (mm)	195

Model	FTYL	FB
Volume (litres)	225	40
Length (mm)	1500	1500
Width (mm)	1000	460
Height (mm)	200	200

EASYFIT WATER TANKS

- Four sizes available: 500, 1000, 2000 and 3000 litres.
- Bayonet-style lid in top of tank.
- Direct down-pipe entry point.
- Unique overflow system with removable cover over the leaf screening channel.
- Overflow outlet moulded in place to take standard down-pipe.
- Two x 20mm outlets.
- UV stabilised for a long outdoor life.

Model	500	1000	2000	3000
Diam. (m)	0.95	0.95	1.29	1.79
Height (m)	0.8	1.56	1.75	1.7



STORAGE TANKS

- Bayonet-style lid.
- 20mm outlet (except 95).
- Manhole-sized 370mm opening.
- Full diameter opening on 95L size.

Model	95	250	420	750
Volume (litres)	95	250	420	750
Diam. (mm)	670	720	710	860
Side Height (mm)		580	1030	1210



ORDER NOW ON | 0508 688 688

PEST CONTROL PRODUCTS



Timms Possum Kill Trap

The Timms Kill Trap is made of tough polyethylene plastic and its light colour is an effective lure to the curious possum. When the possum takes the bait its neck is forced upwards into the upper part of the unique keyhole opening. Death is effective and quick.



Tunnel Trap

The Tunnel Trap has been designed to attract and kill ferrets, stoats and weasels. The small access hole in the front of the trap will stop cats, dogs and other non-target species from entering.



Rat Bait Box

The Bait Box has been designed to sit against a wall to take advantage of the typical hunting characteristics of the rat. The rat can feed inside the bait box without the fear of being discovered. This will ensure an adequate poison strike.



Cargo Corner

CARGO CORNERS

Available in 300L, 600L or 1200L



Dog Bin

DOG BIN / 770H x 480W x 540L



Lawn Roller

LAWN ROLLER 1240H x 400W x 840L
(Roller filled with water)



Drainage Sumps

DRAINAGE SUMP LARGE

1030H x 780W x 475L

DRAINAGE SUMP SMALL

600H x 640W x 345L

MEAL MOBILE

**BUILT STRONG
BUILT TO LAST!**

Models

4M TROUGH / Capacity 1100 Ltrs / 1.1m³
Inside width 800mm 4120L x 430D x 770H
Feeds approx 140/150 cows

6M TROUGH / Capacity 1650 Ltrs / 1.65m³
Inside width 800mm 6200L x 430D x 770H
Feeds approx 180/225 cows



They get out
what you
put in.

**Peach Teats are fitted on Stallion calf feeders
because they're proven to work.**

Skellerup Peach Teats
closely simulate a cow's
natural milk let down,
making for
rapid acceptance
which is ideal for weak
and sick calves.

Talk to your rural retailer or
visit us online skellerup.co.nz

 **SKELLERUP**
is dairy

www.stallion.co.nz

STALLION PLASTICS LTD

73 Railway Road, PO Box 807, Palmerston North 4440, New Zealand
Phone: 0508 688 688, Fax: 06 356 8817, Web: www.stallion.co.nz

*3 Year Warranty on all non mobile feeders excluding teats and caps.


STALLION
ESTABLISHED 1984